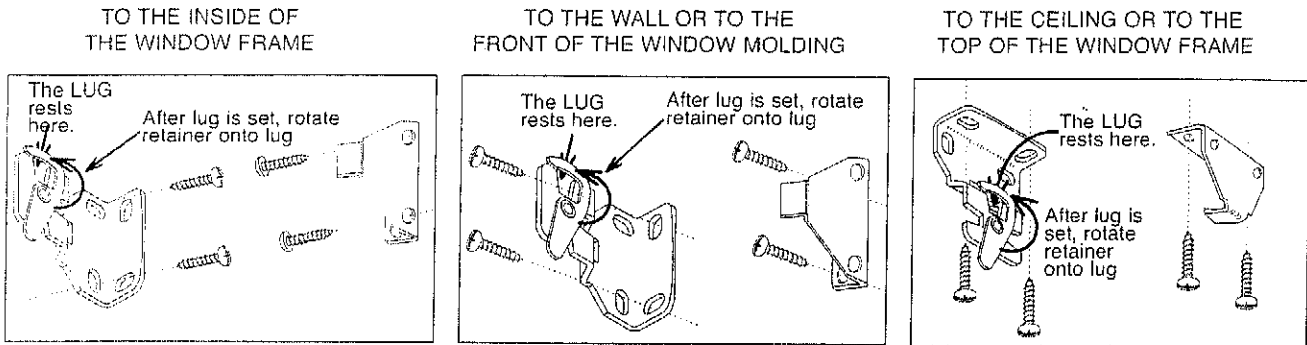


R-Series R-Series Installation

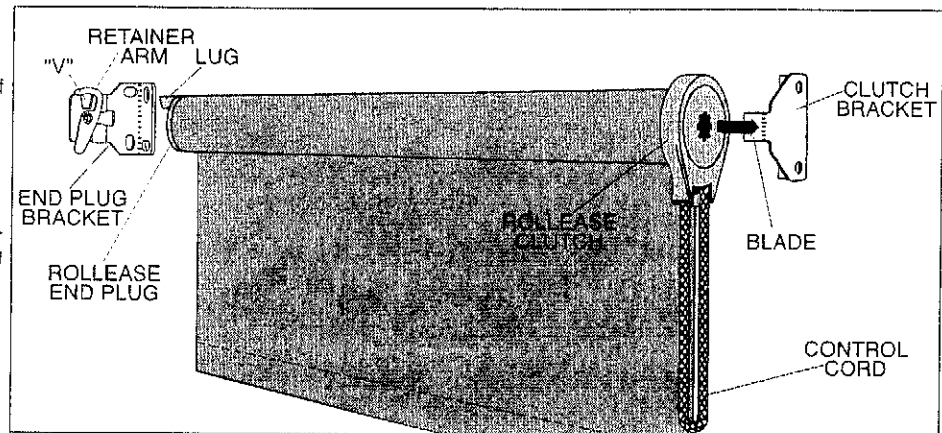
1. MOUNT THE BRACKETS.

If the clutch is on the right end of the shade, attach the brackets to the window frame, window molding, wall or ceiling, as shown below. If the clutch is on the left end of the shade, reverse the bracket positions, left for right.



2. INSTALL THE SHADE.

- Push the clutch straight onto the blade of its bracket. The bottom of the clutch should always point straight down.
- Lower the lug of the end plug onto the "V" of its bracket. The roller should fit in the brackets securely, with just a little play. Rotate the riveted retainer portion to lock the lug in position.



3. INSTALL SAFETYHOLD3 TENSION DEVICE

See SafetyHold3 Assembly Instructions.



4. USE THE CONTROL CORD TO OPERATE THE SHADE.

Pulling gently on the cord in one direction raises the shade; pulling it in the other direction lowers it.

On shades where the fabric rolls against the window, the front cord does the raising. On shades where the fabric rolls toward the room, the rear cord does the raising.

5. ATTACH STOPS TO A CONTROL CORD THAT'S MADE OF BEAD CHAIN.

On metal bead chain, attach a metal stop ball that is at least 5/16" (8mm) in diameter, so that it touches the mouth of the clutch when the shade is in the all-rolled-up position.

For metal or plastic bead chain, lower the shade to sill or floor height, and attach the appropriate metal stop or plastic connector next to the clutch, this prevents the shade from being lowered beyond that point.

TECHNICAL



RollEase®

SafetyHold3™

Bead Chain or Cord Loop Tension Device

New stylish, clear device helps keep children safer by tying down loose window covering bead chain and cord loops. RollEase® ChildSafe™ technology is built into every SafetyHold3™ making bead chains and cords safer when installed properly.

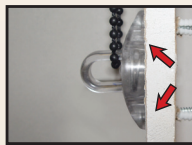


Safety Instructions:

A WCMA 5.2.4 Warning Tag (available from RollEase®) must be fastened to the loop or device prior to shipping.



The SafetyHold3 must be secured to the clutch or headrail to make the shade inoperable without purposeful action of installer.



Use appropriate anchors when installing.

Installation Instructions:

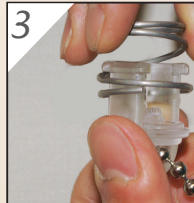
To ensure safety, SafetyHold3 must be installed properly following these five steps.



1 Thread bead chain (or cord) through base and around guide (flat side of base facing guide).



2 Push insert into guide until rounded edge is resting on the bead chain. (For cord, flip insert so opposite side with serrated edge is resting on cord.)



3 Squeeze guide legs while sliding spring over guide completely. (Be sure spring is all the way over the legs of the guide).



4 Slide base, flat side down, over curved end of guide.



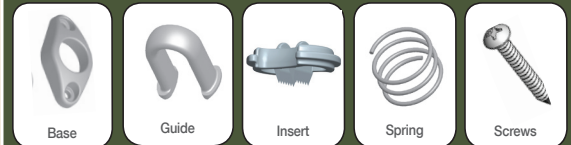
5 Using screws provided, install tension device with maximum tension on the loop while still allowing ease of operation

Patented Device:

RollEase offers this patented device for cord loops and bead chain loops. SafetyHold3 complies with the WCMA-ANSI standard 5.2.4 that requires a tension device to make the shade partially inoperable unless the device is installed.

The tension device is designed for continuous cord or bead chain loops that allows stop balls and/or connectors to pass through.

Parts Included:



Test Data:

- Meets WCMA standards for tension devices.
- Tested to ensure 10 year life of product.

Order Information:

- RE0051203 (Carton of 10)
- RE0051303 (Bulk box of 250)



RollEase Headquarters
200 Harvard Avenue
Stamford, CT 06902-6320 USA
Office: 203.964.1573 / 800.552.5100
Fax: 203.964.0513 Order Fax: 203.358.5865

RollEase West
7310 West Roosevelt Street, Suite 26
Phoenix, AZ 85043 USA
Office: 623.936.5818
Order Fax: 623.936.5294